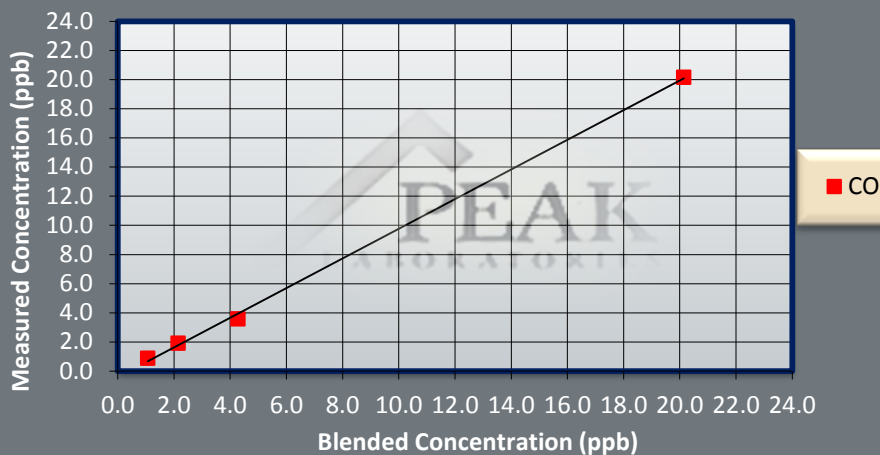


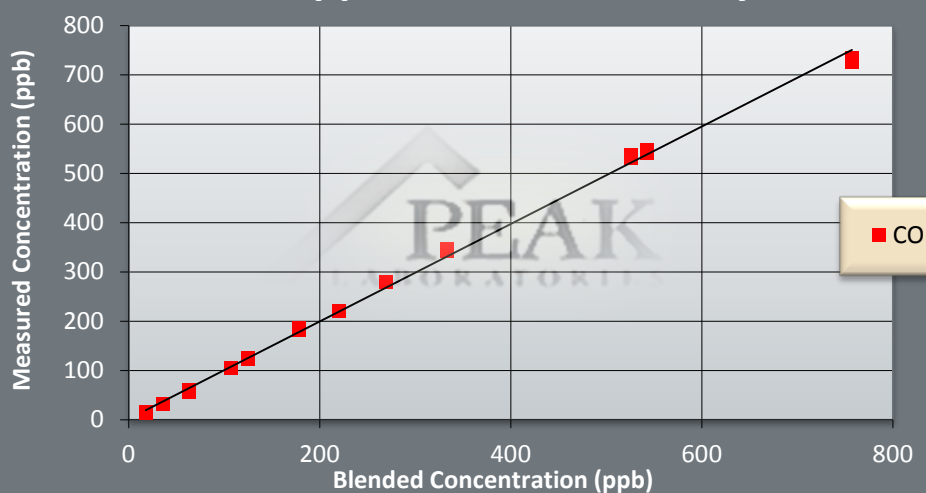
RCP: Lower Level Linearity



Figures 1 & 2 illustrate the lower detection limits of a RCP analyzer monitoring compounds within Hydrogen gas. Using Peak's pioneered hybrid platform results are delivered accurately while maintaining linearity, down to lower and upper levels.



RCP: Upper Level of Linearity



Performance:

Typical lower detection limits (in parts per trillion)

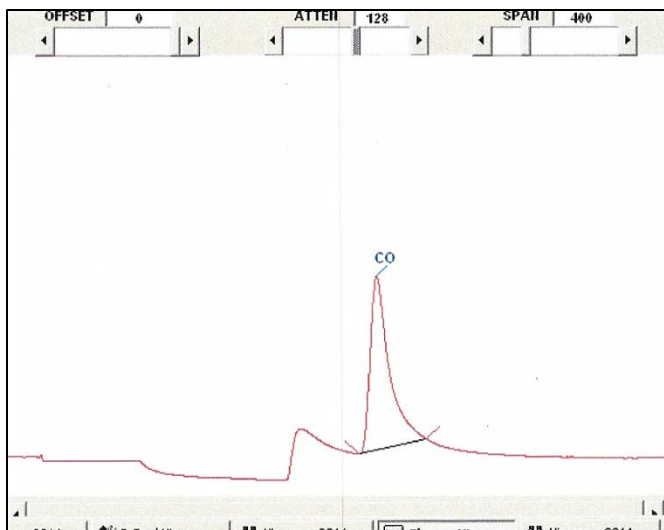
Impurity	Matrix Gas:	H ₂
CO: Carbon Monoxide		500

All performance specifications are based on fully optimized PP1 with 1 cc sample loop

Peak Labs is your analytical partner, not just supplier.

Matrix Gas: Hydrogen

Peak's pioneered platform design provides customers worldwide with a portable field unit capable of delivering fast analysis at lower detection limits. Our proven technology guarantees simple and accurate measurements down to the part per trillion levels, while still offering a wide linear range. Peak's innovative design is proven to be more cost-effective and user-friendly compared to similar instruments, making Peak your number one GC choice.



Carbon Monoxide based chromatograph within Hydrogen matrix gas.

Fields of Application:

The RCP model # 910-150 is the ideal solution for the detection of **Carbon Monoxide** compounds. Listed below are typical field applications for this unit.

- CO in UHP Hydrogen Matrix Gas



Model #910-150 Users

- Linde
- Air Liquide
- Samsung
- SMIC

Contact us today **650-691-1267**

www.peaklaboratories.com