

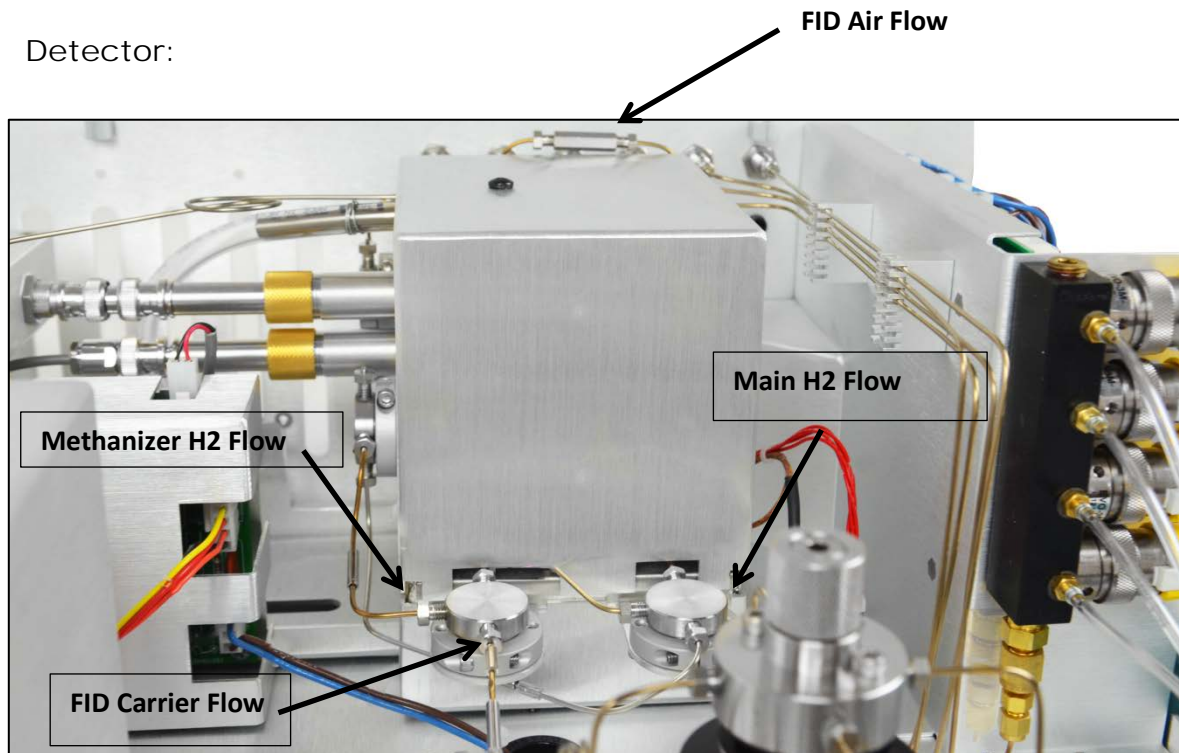
Checking FID Flows:

**Note: Flows Varies with Models Please Check Final Test Data

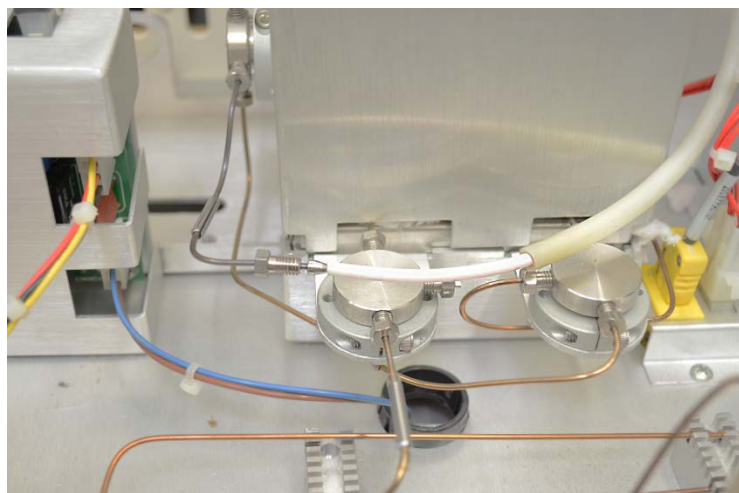
Flow Meter Recommended: Restek ProFlow 6000 Cat#22656



Detector:

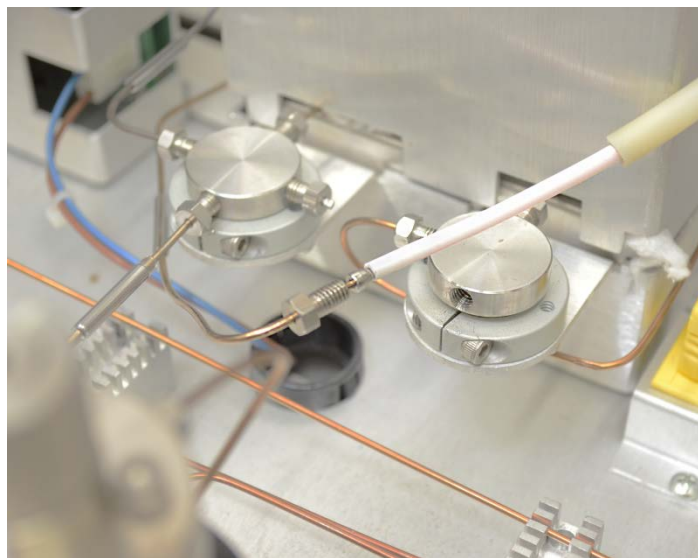


Methanizer H₂ Flow: ~6-9 cc/minute



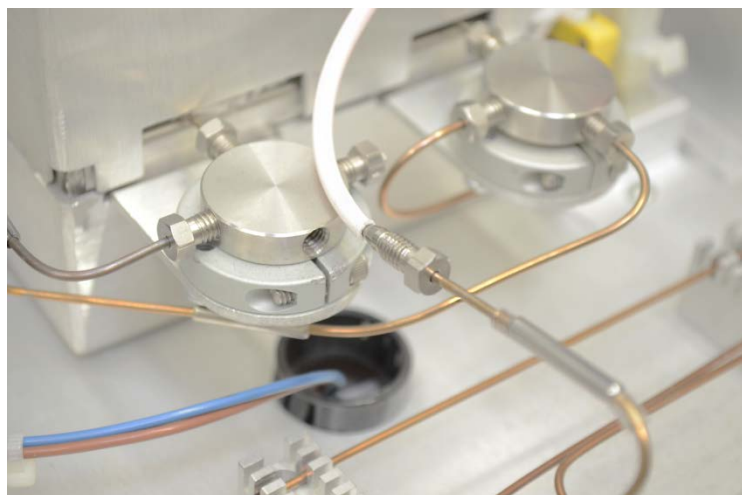
FID S/N 724 Date: 05/07/14
Column 1 Type : HayeSep D 60/80 O2 Length : 93"
Sample Loop Size : 5 cc
Carrier Type : Nitrogen
External Carrier Supply Pressure (@ Bypass) : 60.9 psig
Detector Carrier Flow : 55.7 sccm
FID H2 : 24.8 psig **Ru3O4 H2** : 7.10 sccm **Tip H2**: 26.1 sccm
FID Air Pressure : 20.6 psig **FID Air** : 205 sccm
Bypass Flow : 30.6 sccm
Actuator Pressure : 65 - 85 psig
NV1(Red): 11.3 sccm V1&V2CW **NV2(Silver)**: 61.6 sccm V1&V2CW

Main H₂ Flow: ~ 25-30 cc/minute



FID S/N 724 Date: 05/07/14
Column 1 Type : HayeSep D 60/80 O2 Length : 93"
Sample Loop Size : 5 cc
Carrier Type : Nitrogen
External Carrier Supply Pressure (@ Bypass) : 60.9 psig
Detector Carrier Flow : 55.7 sccm
FID H2 : 24.8 psig **Ru3O4 H2** : 7.10 sccm **Tip H2**: 26.1 sccm
FID Air Pressure : 20.6 psig **FID Air** : 205 sccm
Bypass Flow : 30.6 sccm
Actuator Pressure : 65 - 85 psig
NV1(Red): 11.3 sccm V1&V2CW **NV2(Silver)**: 61.6 sccm V1&V2CW

FID Carrier Gas Flow: ~ 50-75 cc/minute



FID S/N 724 Date: 05/07/14
Column 1 Type : HayeSep D 60/80 O2 Length : 93"
Sample Loop Size: 5 cc
Carrier Type : Nitrogen
External Carrier Supply Pressure (@ Bypass) : 60.9 psig
Detector Carrier Flow : 55.7 sccm
FID H2 : 24.8 psig Ru3O4 H2 : 7.10 sccm Tip H2: 26.1 sccm
FID Air Pressure: 20.6 psig FID Air : 205 sccm
Bypass Flow : 30.6 sccm
Actuator Pressure : 65 - 85 psig
NV1(Red): 11.3 sccm V1&V2CW NV2(Silver): 61.6 sccm V1&V2CW

FID Air Flow: ~ 200-250 cc/minute



FID S/N 724 Date: 05/07/14
Column 1 Type : HayeSep D 60/80 O2 Length : 93"
Sample Loop Size: 5 cc
Carrier Type : Nitrogen
External Carrier Supply Pressure (@ Bypass) : 60.9 psig
Detector Carrier Flow : 55.7 sccm
FID H2 : 24.8 psig Ru3O4 H2 : 7.10 sccm Tip H2: 26.1 sccm
FID Air Pressure: 20.6 psig **FID Air : 205 sccm**
Bypass Flow : 30.6 sccm
Actuator Pressure : 65 - 85 psig
NV1(Red): 11.3 sccm V1&V2CW NV2(Silver): 61.6 sccm V1&V2CW